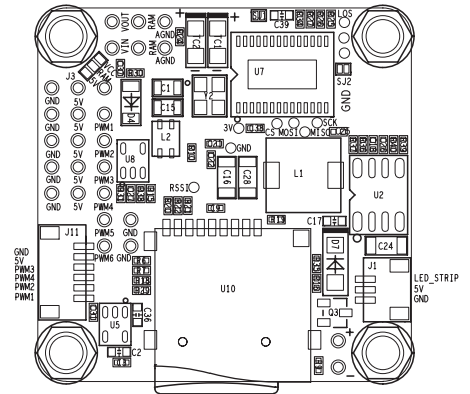
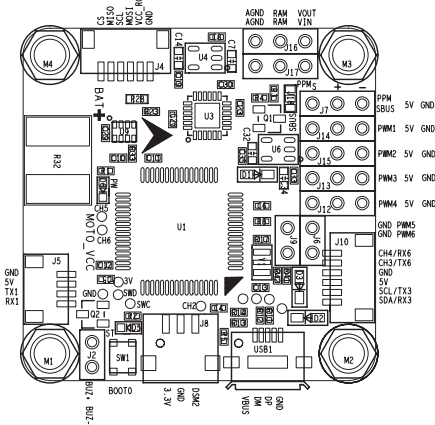


Technical data:

STM32 F405 MCU, runs with Betaflight firmware (support from v3.1), MPU6000 via SPI Bus, SUMD-SBUS-PPM-input size 36x36mm, mounting holes 30,5x30,5mm, Baro sensor (BMP280), 4 PWM output in JST SH1.0 connector and 6

PWM output in soldering place for pins, input voltage Lipo (2-6S), 5V 1A BEC output, SD-card slot, STM32 controls the OSD Chip via SPI in DMA mode, external SPI-interface for additional applications, less CPU using, faster rate, internal current sensor, internal PDB, internal LC filter



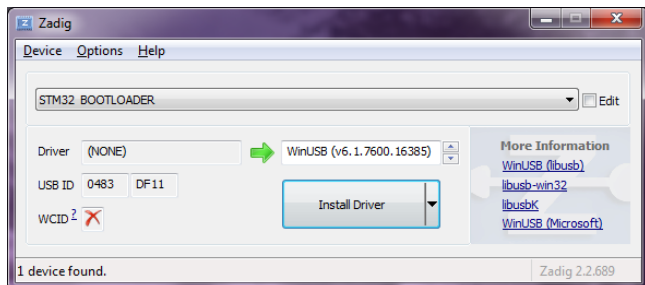
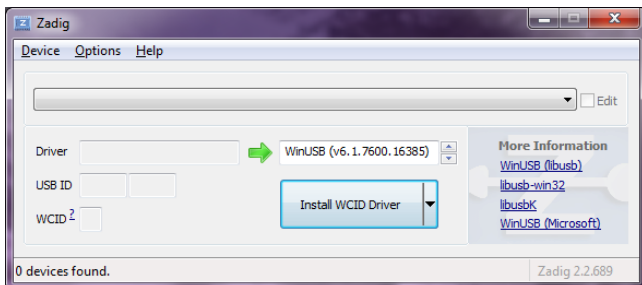
Firmware Update

OMNIBUS is supported by Betaflight from v3.1, use target „OMNIBUS F4SD“ to update the firmware.

First change driver with „Zadig“ <http://zadig.akeo.ie/>

To flash the firmware you have to enter the DFU mode. On Windows 10 you have to use a tool called Zadig (download and start it) to be able to switch drivers for DFU mode to work. In order to switch drivers you have to take the following steps.

- On the Flightcontrol, press the BOOT button or insert the bridge and connect the USB cable (the red LED is low).
- Start Zadig and click on „Options“ and choose „List All Devices“.



- Choose from the list „STM32 BOOTLOADER“ .
- For „Driver“, select „WinUSB (v6.1.7600.16385)“, then click on „Replace Driver“ on the right.
- Close Zadig, unplug Flightcontrol, close all Google Chrome programs. Restart the computer.
- Search Google Chrome app „Betaflight“ , install and open app
- Connect Flightcontrol

For further information please visit www.graupner.de on the product page of the article

Service center

Graupner/SJ-Zentralservice

Graupner/SJ GmbH
Henriettenstrasse 96
D-73230 Kirchheim / Teck

Servicehotline

(+49) (0)7021/722-130
Monday- Thursday
9:15 am- 4:00 pm
Friday
9:15 am- 1:00 pm

Graupner USA
3941 Park Dr Suite 20-571
El Dorado Hills, CA 95762

Website: www.graupnerusa.com
Phone: +1 855-572-4746
Email: service@graupnerusa.com

