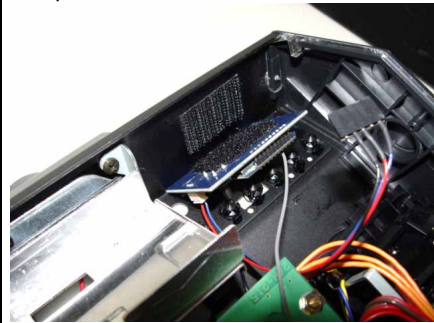
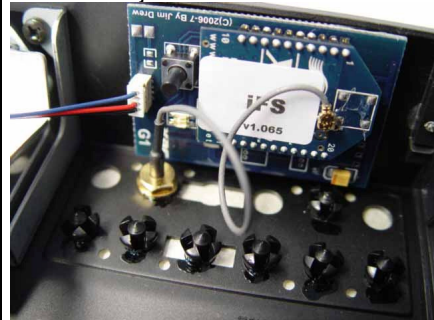


1. Einzelteile
Components
Composants
componenti
componentes



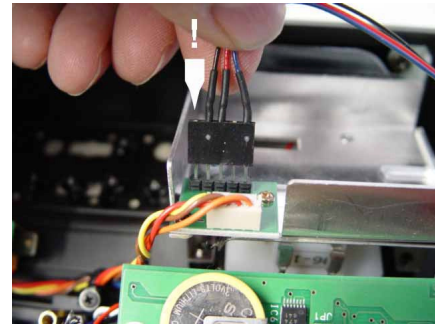
2. Klettband anbringen
Installing velcro tape
Installer un Velcro
applicazione velcro
instalar el tejido autoadherente



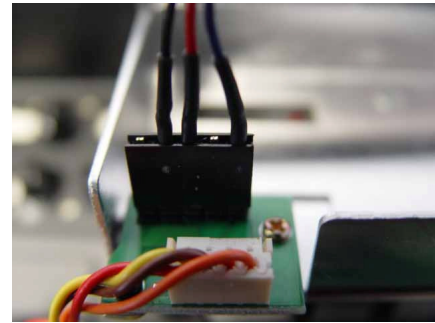
3. Montage von Platine und Antennenbuchse
Installation of module and antenna connector
Montage de la platine et de la fiche d'antenne
montaggio circuito e connessione antenna
instalar platina y conector antenna



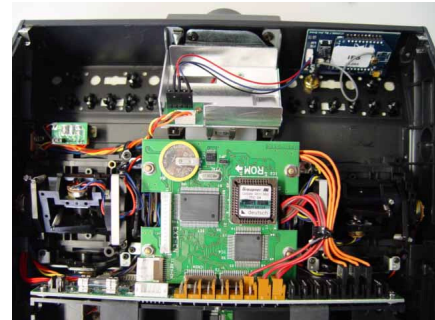
4. Antennenanschluß
Antenna connector
Base de raccordement d'antenne
connessione antenna
conector antenna



5. Anstecken an das HF-Modul
RF module connection
Brancher sur le module HF
inserimento modulo RF
conexión modulo RF



6. Verbindung
Connection
Connexion
collegamento
conexión



7. Gesamtansicht
Total view
Vue d'ensemble
veduta totale
vista total



8. Fertig
Ready
Terminé
pronto
Listo